

Features & Benefits

- True 3" 2-Stage Electronic Preset valve with Air check capability for use with both mechanical and optical A/Es.
- Right angle valve providing multiple outlet orientations.
- Compact design.
- Low pressure drop when compared to existing offering of a 2" block valve that is used along with a 3X2 adapter.
- For Class 1 applications only.

Specifications

Safety:
Designed to meet Class 1, Division 2 requirements.

Materials of Construction:
Valve Body: Anodized Aluminum

Elastomers: Viton O-rings, PTFE Seal, Klinger Gasket

Pilot Control System:
Brass solenoid and fittings with flared copper tubing with Stainless steel braided hose

Temperature Rating:
-40° F to 160° F (-40° C to 71° C)

Pressure Rating:
Maximum non-shock working pressure.
• 150 PSI (10.3 BAR)
Maximum differential pressure.
• 100 PSI (6.9 BAR)
Pressure drop (dP).
• 8 PSI at 200 Gal/Min for 30 SSU product.

Maximum Flow Range:
300 GPM (1136 LPM) for 30 SSU products.

Viscosity Range:
30 to 150 SSU.

Products:
Refined Fuels – Gasoline, gasohol, diesel fuel and fuel oil.

Functionality:
2 stage preset valve with air check function.

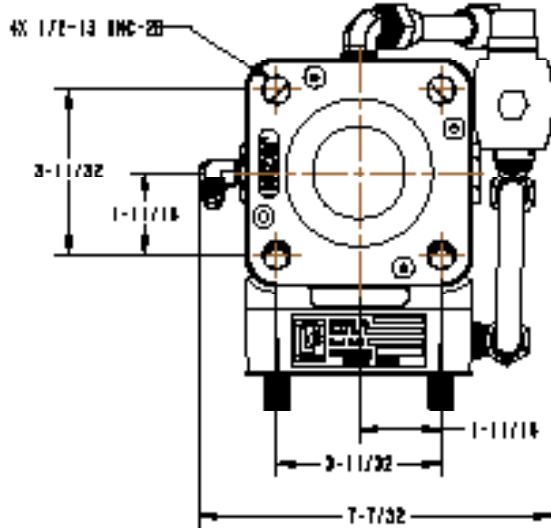
Companion Flange Size:
3"

Two-Stage Operation:
Minimum recommended volume for second stage flow.
M15: 20 gallons (76 litres)
M25: 30 gallons (114 litres)

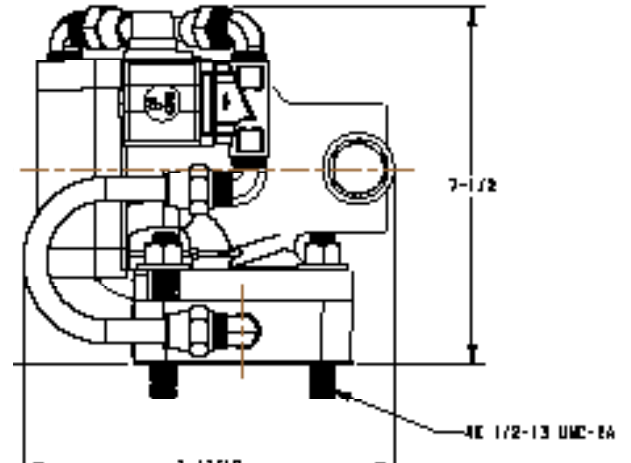
Solenoid Valves:
Operation: (1) 2-way normally closed and
(1) 3-way normally open
Voltage: +10.2 to 13.6 VDC

Main Valve Dimensions

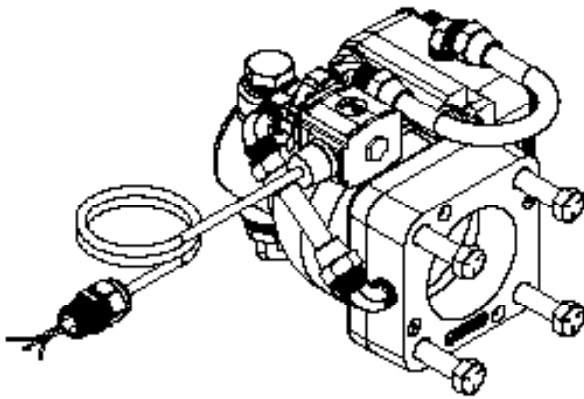
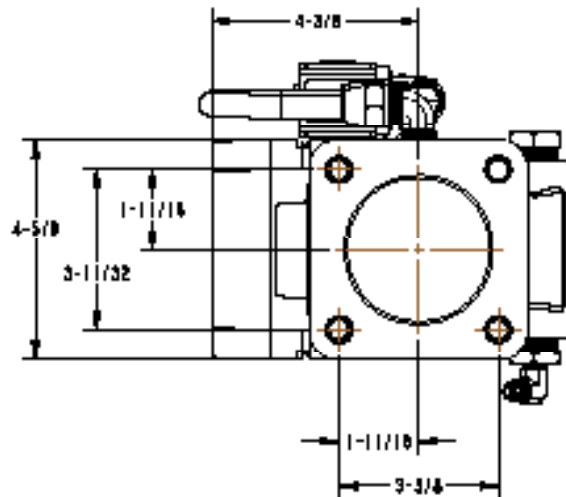
Bottom



Side



Top



- For retrofitting systems with a mechanical air eliminator, a limited bleed valve plate will need to be ordered and installed for air the check capability of the E15 valve, allowing proper operation.

- When ordering a new meter system with a mechanical air eliminator and E15 valve, the limited bleed valve plate will be installed prior to shipment.

- For meters with optical air eliminator use the tee provided in the 82584 kit for aircheck functionality and proper operation of the E15 valve.